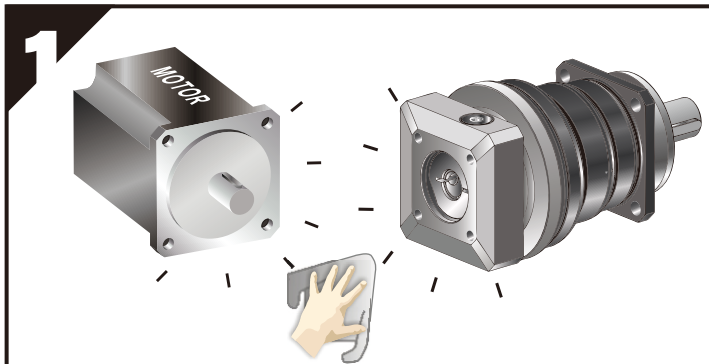
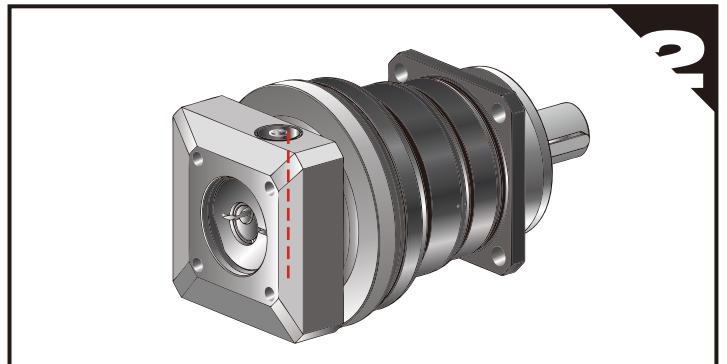




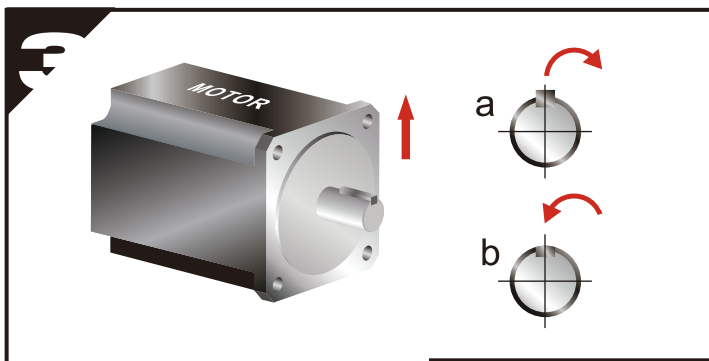
MOUNTING INSTRUCTION (MF Series)



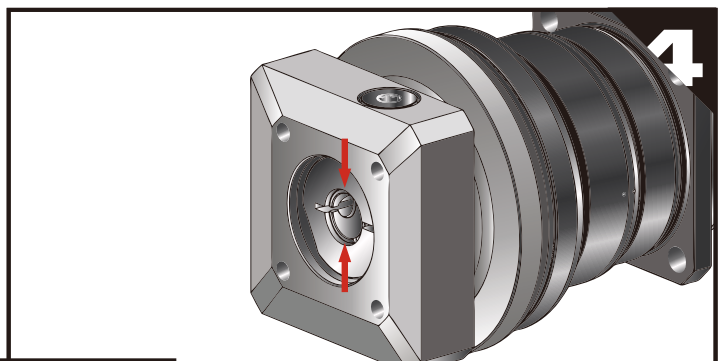
1 Double-check the motor and gearbox size. Clean the mounting surfaces.



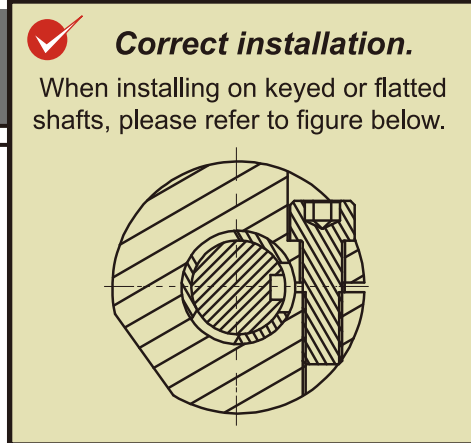
2 Rotate the set collar until the bolt hole is aligned with access hole.



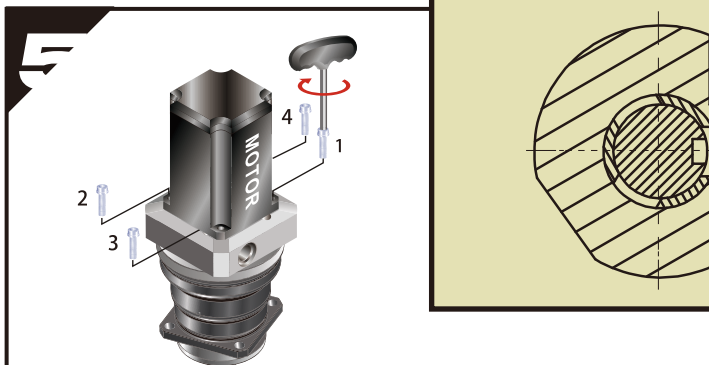
3 a. Remove motor key, if necessary.
b. Insert balance key, if necessary.



4 Check motor shaft size. (If necessary, please insert bush)



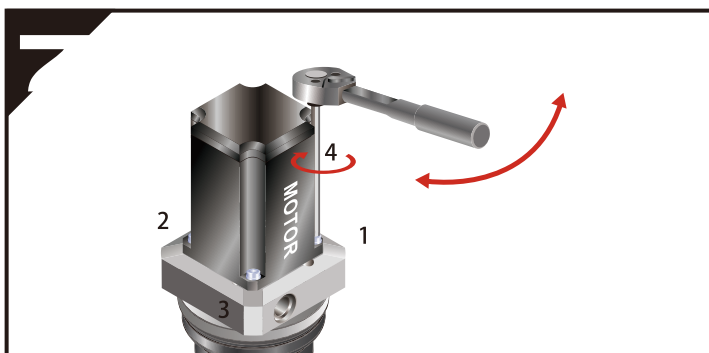
Correct installation.
When installing on keyed or flatted shafts, please refer to figure below.



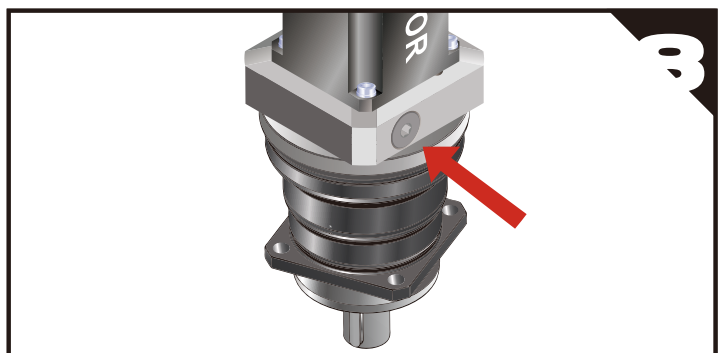
5 Set at vertical position. Tighten the mounting bolts (including washer) in 1~4 order with wrench to 5% specified torque. (See Table 1)



6 Tighten the set collar bolt with torque wrench to specified torque. (See Table 2)



7 Tighten the mounting bolts in 1~4 order with torque wrench to specified torque. (See Table 1)



8 Insert the plug.

Table 1 Tightening Torque Recommended for Motor Mounting Bolt

Bolt Size	Width Across Flats	Strength 8.8 Tightening Torque		Strength 10.9 Tightening Torque		Strength 12.9 Tightening Torque	
	[mm]	[Nm]	[In-lbs]	[Nm]	[In-lbs]	[Nm]	[In-lbs]
M3 x 0.5P	2.5	1.3	12	1.8	16	2.1	19
M4 x 0.7P	3	3	27	4.1	37	4.9	44
M5 x 0.8P	4	6.1	55	8.2	73	9.8	87
M6 x 1P	5	11	98	14	124	17	151
M8 x 1.25P	6	25	222	34	302	41	364
M10 x 1.5P	8	49	434	67	594	80	709
M12 x 1.75P	10	85	753	116	1028	139	1232
M14 x 2P	12	137	1214	186	1648	223	1976
M16 x 2P	14	210	1860	286	2534	343	3038

Table 2 Tightening Torque Recommended for Set Collar Bolt

Model	Ø (C3)	8	11	14	19	24	28	32	35	38	42	48	55	60
MF060	1-st	-	M5	M5	M6	-	-	-	-	-	-	-	-	-
	2-st	M5	M5	M5	-	-	-	-	-	-	-	-	-	-
MF075	1-st	-	-	M6	M6	M10	-	-	-	-	-	-	-	-
	2-st	-	M5	M5	M6	-	-	-	-	-	-	-	-	-
MF100	1-st	-	-	-	M8	M10	M10	M10	M12	M12	-	-	-	-
	2-st	-	-	M6	M6	M10	-	-	-	-	-	-	-	-
MF140	1-st	-	-	-	-	M10	M10	M10	M12	M12	M12	M16	-	-
	2-st	-	-	-	M8	M10	M10	M10	M12	M12	-	-	-	-
MF180	1-st	-	-	-	-	-	-	M10	M12	M12	M12	M16	M16	-
	2-st	-	-	-	-	M10	M10	M10	M12	M12	M12	M16	-	-
MF210	1-st	-	-	-	-	-	-	-	M12	M12	M12	M16	M16	-
	2-st	-	-	-	-	-	-	M10	M12	M12	M12	M16	-	-
MF240	1-st	-	-	-	-	-	-	-	M12	M12	M12	M16	M16	M16
	2-st	-	-	-	-	-	-	-	M12	M12	M12	M16	M16	-

Bole Size	[mm]	M5 x 0.8P	M6 x 1P	M8 x 1.25P	M10 x 1.5P	M12 x 1.75P	M16 x 2P
Width Across Flats	[mm]	4	5	6	8	10	14
Tightening Torque	[Nm]	9.8	17	41	80	139	343
	[In-lbs]	87	151	364	709	1232	3038

NOTE: Tightening Torque values can be exceeded by 20% for increased clamping force.



APEX DYNAMICS, INC.

No.10, Keyuan 3rd RD, Situn District, Taichung City 40763, Taiwan (R.O.C)

Tel: 886-4-24650219 | Fax: 886-4-24650118

sales@apexdyna.com | http://www.apexdyna.com



APEX-2024-02-01